

OAK

WELCOME GUIDE

2025 DIRECTORY



OAK.SUPPORT

WELCOME

Welcome to OAK.SUPPORT!

Our team ensures personal injury patients access quality healthcare, while doctors on liens are compensated fairly. At **OAK.SUPPORT**, we assist uninsured personal injury plaintiffs in funding top-tier medical care. We prioritize patient outcomes, focusing on transparency, collaboration, and technology.

With years of community service, we're committed to aiding accident victims in their recovery journey. Through our dedication, we've built a reputation for exceptional support and guidance, ensuring they receive the care and compensation they deserve.

At **OAK.SUPPORT**, we're driven by excellence and a genuine desire to make a positive impact on those we serve.



Kim Vaughn Martin
FOUNDER.CEO



CONTENTS

WHAT YOU CAN EXPECT – ATTORNEYS	4
CASES WE FUND	5
WHAT YOU CAN EXPECT – PROVIDERS	6
PRE-SETTLEMENT FUNDING	8
NATIONAL IMAGING CENTERS	9
OUR LOCATIONS – CA	10
OUR LOCATIONS – NV	12
OUR LOCATIONS – AZ	14
SURGERY CENTERS	16
SPEECH-LANGUAGE PATHOLOGIST	17
LITIGATION FINANCING	18
CONTACT US	20

WHAT YOU CAN EXPECT

ATTORNEYS

CONCIERGE FOR LAW FIRMS

Our programs are committed to enabling your law practice to offer the best possible care to your clients without having to risk financial losses. To contact us, fill out the form on our **Contact Us** page or call OAK.SUPPORT at **833.777.5077** today!

WE CAN HELP YOUR CASE

We set all client appointments for your law firm! Let us help you take your time back.

We help with:

- ✓ CASE EVALUATION
- ✓ FINANCIAL MANAGEMENT
- ✓ PRE-SETTLEMENT FINANCING
- ✓ MEDICAL BILL MANAGEMENT
- ✓ LITIGATION FUNDING
- ✓ ACCREDITED PHYSICIANS



CASES WE FUND

We fund almost all types of cases. Our team has created customized solutions and risk models that can accommodate additional case types.

- Car accidents
- Bicycle accidents
- Bus accidents
- Motorcycle accidents
- Pedestrian accidents
- Truck accidents
- Medical malpractice
- Nursing home negligence
- Slip & fall
- Wrongful death
- Dog bite attack
- Construction accidents
- Product liability
- Workplace injury
- Jones act
- Spinal cord injury

WHAT YOU CAN EXPECT

PROVIDERS

CUSTOMIZED FUNDING SOLUTIONS FOR MEDICAL PROVIDERS

Our programs are committed to enabling your practice to offer the best possible care to your clients without having to risk financial losses. To contact us, fill out the form on our **Contact Us** page or call OAK.SUPPORT at **833.777.5077** today!

WHAT DO WE DO?

We provide customized funding solutions to medical providers and hospitals.

Our services include:

- ✓ **MEDICAL LIEN FINANCING**
- ✓ **SERVICE RECEIVABLES**
- ✓ **CUSTOMIZED SOLUTIONS**

OUR PARTNERS

We partner with Hospitals, Imaging Centers, Surgery Centers, Doctors on Liens and more!

Our team has been committed to ensuring personal injury patients have access to quality healthcare while medical providers are compensated quickly and fairly.

CHALLENGE

OAK.SUPPORT is devoted to helping bridge the gap between your patient's medical needs and your financial situation.

Our team promises to offer the financial support necessary to help your patients get the treatment they need while awaiting settlement for active personal injury cases.

OAK.SUPPORT offers medical lien management for medical providers and attorneys. This ensures patients get the care they deserve, and medical care providers get paid for the services they render no matter the outcome of a personal injury settlement.



INCREASE REVENUE

OAK.SUPPORT helps medical providers grow their practice with a steady stream of new patients. Call us today at **833.777.5077** and talk to one of our experts.

ADDED REFERRAL SOURCES

Medical lien financing can bring valuable business to your practice. OAK.SUPPORT takes all the risk so you don't have to.

QUICK GUARANTEED PAYMENTS

Customized solutions for your practice ensure that you get the most out of your business so you never worry about revenue.

COMPETITIVE REIMBURSEMENT

Patient funding lets our doctors focus on patient care while we take care of the rest. You never worry about medical bill management.



PRE-SETTLEMENT FUNDING

Same day approval, same day funding!
Get money in your pocket **before** your case is settled!



YOU APPLY

Easy no obligation application.



WE REVIEW

We evaluate your injury case.



YOU GET PAID

Once approved, we cut you a check.



YOU RELAX & RECOVER

Pay your bills, no restrictions on use!

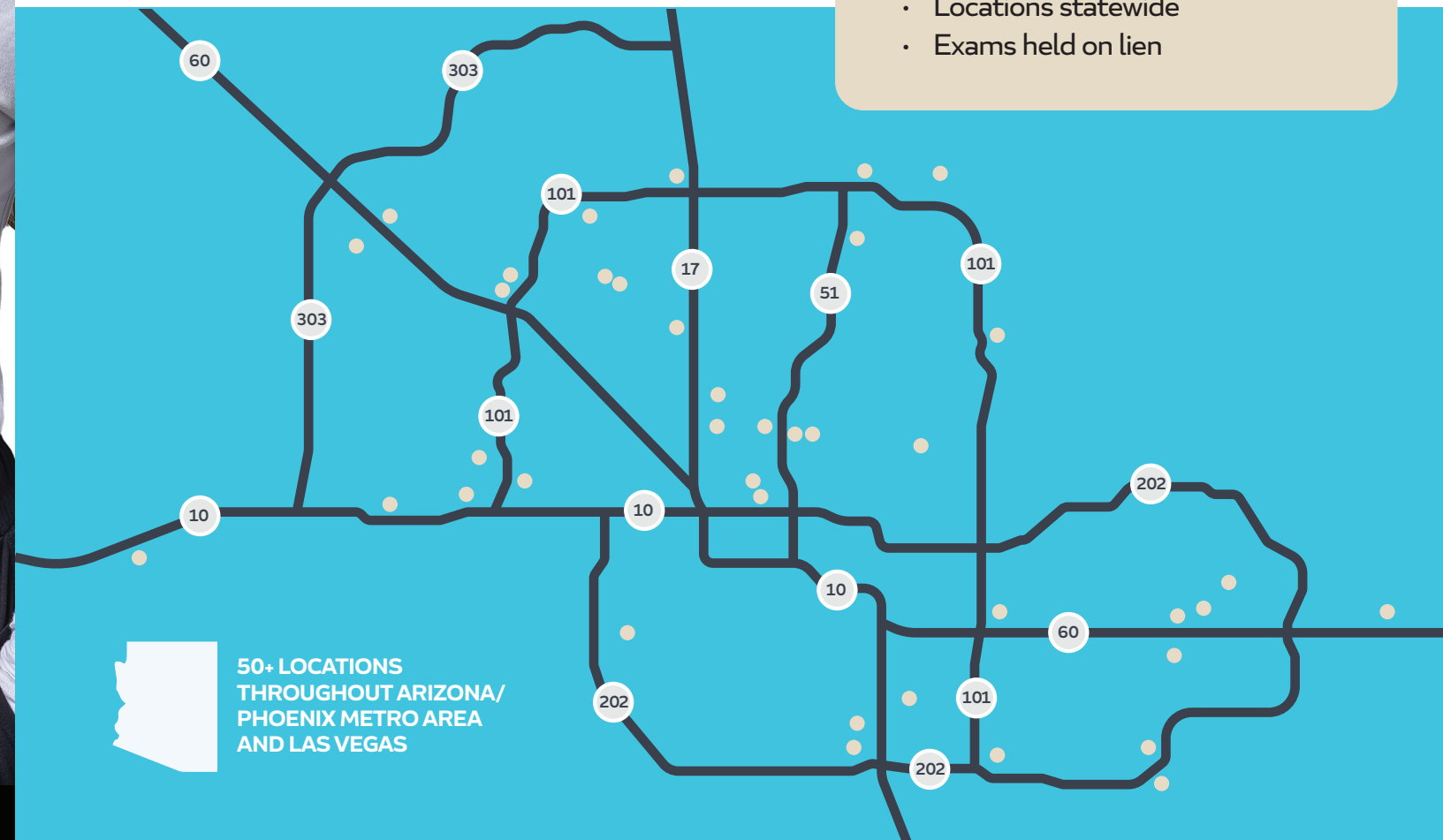
- ✔ 3% MONTHLY
- ✔ ONE-TIME ORIGATION FEE
- ✔ NO PAYMENT UNTIL CASE RESOLVES
- ✔ NO REPAYMENT IF YOU LOSE YOUR CASE
- ✔ NO RISK!

NATIONAL IMAGING CENTERS

We appreciate your referrals, and are dedicated to providing the **highest-quality imaging services** for your patients.

National Imaging Centers offers modern solutions for imaging needs

- Exams read by Neuro & MSK Radiologists specializing in acute trauma
- 3T MRI
- Open MRI & IV Sedation MRI's available for claustrophobic patients
- TBI MRI studies
- Online portal access for viewing images & reports
- Locations statewide
- Exams held on lien



833.777.5077

INFO@OAK.SUPPORT

OAK.SUPPORT



CASE MANAGEMENT SIMPLIFIED – CALIFORNIA

OUR LOCATIONS

Please call OAK.SUPPORT at 833.777.5077 to schedule.

Specialists available all throughout California.

NEUROSURGEON

San Diego County · 92042
Bakersfield · 93309
Newport Beach · 92660
San Diego · 92129

NEUROSURGEON/SPINE SURGEON

Atascadero · 90025
Beverly Hills · 90035, 90037, 90044, 90046
Calabasas · 90048
Castro Valley · 90094
Colton · 92313
Encino · 90262, 90303, 90401, 90403
Escondido · 92025
Fairfield · 94533
Folsom · 90640, 90706, 90740
Fresno · 90807, 90813, 90815, 91006, 91101
Glendale · 91105, 91106, 91203, 91204
Hayward · 91204
Huntington Beach · 91204
Irvine · 91206, 91302
Long Beach · 91316, 91324
Los Angeles · 91340, 91350, 91351, 91354, 91355, 91356, 91403, 91405, 91411, 91423
Modesto · 91770
Montebello · 91786, 91790
Newport Beach · 92203, 92211
Oakland · 92243
Orange · 92264, 92395, 92506
Pasadena · 92691, 92701, 92704
Paso Robles · 93446
Pomona · 92804
Rancho Cucamonga · 92805
Redwood City · 94061
Richmond · 94530
Riverside · 92867, 92868
Sacramento · 92882, 93010, 93033, 93036
San Diego · 22434, 91945, 92029, 92071, 91911, 92014, 92037, 92091, 91932, 92025, 92038, 92092, 91942, 92027, 92039, 92093
San Francisco · 93401, 93405, 93422, 93534

San Jose · 93534, 93551, 93622, 93637
San Leandro · 93710, 93711
San Luis Obispo · 93720
Santa Ana · 93727, 93901, 93940, 94115
San Pablo · 94803
San Ramon · 94582
Santa Barbara · 93101
Santa Rosa · 94558
Sherman Oaks · 94578, 94589, 94596, 94598, 94609
Temecula · 92028
Thousand Oaks · 91319
Tracy · 95117
Upland · 95117
Valencia · 95124
Vallejo · 95138
Van Nuys · 95207
West Covina · 95628, 95630, 95661, 95683, 95816, 95826, 95827

ORTHOPEDIC SURGEON

Anaheim · 90001, 90008, 90017, 90023
Bakersfield · 90025, 90026
Beverly Hills · 90035, 90037, 90044, 90046
Brentwood · 94513
Castro Valley · 94541
Culver City · 90211
Downey · 90241
Encino · 90262, 90303, 90401, 90403, 90403, 90460, 90505
Folsom · 90640, 90706, 90740
Fountain Valley · 90746, 90806
Fresno · 90807, 90813, 90815, 91006, 91101
Garden Grove · 92843
Glendale · 91101, 91105, 91106, 91203, 91204
Hawthorne · 91204
Huntington Beach · 91204
Irvine · 91206, 91302
Lancaster · 91304, 91307, 91316
Los Angeles · 91340, 91350, 91351, 91354, 91355, 91356, 91403, 91405, 91411, 91423

Los Gatos · 91436
Modesto · 91770
Mountain View · 91790
Morgan Hill · 91790
Murrieta · 92562
Newport Beach · 92203, 92211
Oakland · 92243
Orange · 92264, 92395, 92506
Palm Desert · 92648, 92653
Palm Springs · 92663
Pasadena · 92691, 92701, 92704
Pomona · 92804
Riverside · 92867, 92868
Sacramento · 92882, 93010, 93033, 93036
Santa Ana · 93727, 93901, 93940, 94115
San Diego · 22434, 91945, 92029, 92071, 91911, 92014, 92037, 92091, 91932, 92025, 92038, 92092, 91942, 92027, 92039, 92093
San Jose · 93534, 93551, 93622, 93637
San Juan Capistrano · 93637
San Leandro · 93654, 93710, 93711
Santa Fe Springs · 90605
Santa Monica · 94545, 94546, 94558
Sherman Oaks · 94578, 94589, 94596, 94598, 94609
Temecula · 92028
Thousand Oaks · 91319
Upland · 95117
Valencia · 95124
Van Nuys · 95207
West Covina · 95628, 95630, 95661, 95683, 95816, 95826, 95827
Las Vegas & Henderson, NV ·

NEUROLOGIST- EMG/ NCV TESTING

Bakersfield · 90025, 90026
Beverly Hills · 90035, 90037, 90044, 90046
Brentwood · 94513
Concord · 94518
Downey · 90241
Fairfield · 94533

Fountain Valley · 90746, 90806
Fremont · 94536
Hayward · 91204
Huntington Beach · 91204
Irvine · 91206, 91302
Long Beach · 91316, 91324
Los Angeles · 91340, 91350, 91351, 91354, 91355, 91356, 91403, 91405, 91411, 91423
Mission Viejo · 91764, 91768
Murrieta · 92562
Newport Beach · 92203, 92211
Ontario · 92260, 92263
Redwood City · 94061
Richmond · 94530
Riverside · 92867, 92868
Sacramento · 92882, 93010, 93033, 93036
Santa Ana · 93727, 93901, 93940, 94115
San Diego · 22434, 91945, 92029, 92071, 91911, 92014, 92037, 92091, 91932, 92025, 92038, 92092, 91942, 92027, 92039, 92093
San Francisco · 93401, 93405, 93422, 93534
San Jose · 93534, 93551, 93622, 93637
San Leandro · 93654, 93710, 93711
San Mateo · 94010
Sherman Oaks · 94578, 94589, 94596, 94598, 94609
Tarzana · 95037
West Covina · 95628, 95630, 95661, 95683, 95816, 95826, 95827

PAIN MANAGEMENT/ PHYSIATRIST

Alhambra · 91776
Anaheim · 90001, 90008, 90017, 90023
Bakersfield · 90025, 90026
Beverly Hills · 90035, 90037, 90044, 90046
Brentwood · 94513
Calabasas · 90048
Castro Valley · 94541
Colton · 92313
Corona · 90201, 90210
Downey · 90241
Encino · 90262, 90303, 90401, 90403, 90403, 90460, 9050
Fairfield · 94533
Folsom · 90640, 90706, 90740
Fountain Valley · 90746, 90806
Fresno · 90807, 90813, 90815, 91006, 91101
Glendale · 91101, 91105, 91106, 91203, 91204
Hayward · 91204
Huntington Beach · 91204
Irvine · 91206, 91302
Laguna Hills · 91302
Lancaster · 91304, 91307, 91316
Los Angeles · 91340, 91350, 91351, 91354, 91355, 91356, 91403, 91405, 91411, 91423
Los Gatos · 91436
Milpitas · 91730, 91732, 91764

Mission Viejo · 91764, 91768
Mountain View · 91790
Morgan Hill · 91790
Murrieta · 92562
Newport Beach · 92203, 92211
Oakland · 92243
Orange · 92264, 92395, 92506
Pasadena · 92691, 92701, 92704
Pomona · 92804
Richmond · 94530
Riverside · 92867, 92868
Sacramento · 92882, 93010, 93033, 93036
San Bernardino · 92346
San Diego · 22434, 91945, 92029, 92071, 91911, 92014, 92037, 92091, 91932, 92025, 92038, 92092, 91942, 92027, 92039, 92093
San Francisco · 93401, 93405, 93422, 93534
San Jose · 93534, 93551, 93622, 93637
San Juan Capistrano · 93637
San Leandro · 93654, 93710, 93711
San Luis Obispo · 93720
San Pablo · 94803
Santa Ana · 93727, 93901, 93940, 94115
Santa Barbara · 93101
Santa Fe Springs · 90605
Santa Monica · 94545, 94546, 94558
Sherman Oaks · 94578, 94589, 94596, 94598, 94609
Stockton · 95032, 95035
Tarzana · 95037
Temecula · 92028
Thousand Oaks · 91319
Tracy · 95117
Upland · 95117
Valencia · 95124
Van Nuys · 95207
Walnut Creek · 95376, 95401, 95624
West Covina · 91790, 95628, 95630, 95661, 95683, 95816, 95826, 95827

INTERNAL MEDICINE/ FAMILY PRACTICE

Arcadia · 90025
Canyon Country · 95376, 95401, 95624
Hawthorne · 91204
Los Angeles · 91340, 91350, 91351, 91354, 91355, 91356, 91403, 91405, 91411, 91423
Murrieta · 92562
San Diego · 22434, 91945, 92029, 92071, 91911, 92014, 92037, 92091, 91932, 92025, 92038, 92092, 91942, 92027, 92039, 92093
Santa Clarita · 94115, 94116, 94509
Seal Beach · 94577
Sherman Oaks · 94578, 94589, 94596, 94598, 94609

ER/TRAUMA PHYSICIAN/ URGENT CARE

Arcadia · 90025

Canyon Country · 90094
Hawthorne · 91204
Los Angeles · 91340, 91350, 91351, 91354, 91355, 91356, 91403, 91405, 91411, 91423
Murrieta · 92562
San Diego · 22434, 91945, 92029, 92071, 91911, 92014, 92037, 92091, 91932, 92025, 92038, 92092, 91942, 92027, 92039, 92093
Santa Clarita · 94115, 94116, 94509
Seal Beach · 94577
Sherman Oaks · 94578, 94589, 94596, 94598, 94609

PODIATRIST/FOOT & ANKLE SURGEON

Bakersfield · 90025, 90026
Escondido · 92025
Los Angeles · 91340, 91350, 91351, 91354, 91355, 91356, 91403, 91405, 91411, 91423
Silver Lake · 90004
Valencia · 95124
West Covina · 95628, 95630, 95661, 95683, 95816, 95826, 95827

PLASTIC SURGEON

Beverly Hills · 90035, 90037, 90044, 90046
Los Angeles · 91340, 91350, 91351, 91354, 91355, 91356, 91403, 91405, 91411, 91423
San Diego · 91911

ORAL & MAXILLOFACIAL SURGEON

Beverly Hills · 90035, 90037, 90044, 90046
Los Angeles · 91340, 91350, 91351, 91354, 91355, 91356, 91403, 91405, 91411, 91423

DENTIST/TMJ

San Diego · 22434, 91945, 92029, 92071, 91911, 92014, 92037, 92091, 91932, 92025, 92038, 92092, 91942, 92027, 92039, 92093

PSYCHOLOGIST/ TELEHEALTH

Los Angeles · 91340, 91350, 91351, 91354, 91355, 91356, 91403, 91405, 91411, 91423
Sacramento · 92882, 93010, 93033, 93036
San Diego · 22434, 91945, 92029, 92071, 91911, 92014, 92037, 92091, 91932, 92025, 92038, 92092, 91942, 92027, 92039, 92093

CHIROPRACTIC/ PHYSICAL THERAPY

(Providers throughout California)

MRI/DIAGNOSTIC IMAGING

(Locations throughout California)

California, Nevada & Arizona locations available. All scheduling will be done through OAK.SUPPORT.

CASE MANAGEMENT SIMPLIFIED – NEVADA

OUR LOCATIONS

Please call OAK.SUPPORT at 833.777.5077 to schedule.
Specialists available all throughout Nevada.

ORTHOPEDIC SPINE SURGEON

Las Vegas · 89123, 89128

ORTHOPEDIC

Las Vegas · 89147

PAIN MANAGEMENT

Las Vegas · 89113, 89011, 89117, 89109,
89144, 89149, 89115, 89104
Henderson, NV · 89002
North Las Vegas, NV · 89030
Pahrump, NV · 89048

NEUROSURGEON

Las Vegas, NV · 89123, 89117, 89101, 89102,
89103
Henderson, NV · 89011, 89012, 89014

NEUROLOGIST | NERVE CONDUCTION | EEG

Las Vegas, NV · 89117, 89109, 89144
North Las Vegas, NV · 89030
Pahrump, NV · 89048

PLASTIC SURGEON | ENT

Las Vegas, NV · 89117

PRIMARY CARE

Las Vegas, NV · 89117, 89109

IMAGING

Las Vegas, NV · 89121, 89128, 89109, 89129,
89149, 89113, 89103, 89104, 89115
North Las Vegas · 89032
Henderson, NV · 89014, 89052

CHIROPRACTOR

Las Vegas, NV · 89101, 89102, 89103, 89130
Henderson, NV · Mobile, 89011, 89012,
89014

PHYSICAL THERAPY

Las Vegas, NV · 89106, 89030, 89117,
89109, 89144
North Las Vegas, NV · 89030
Pahrump, NV · 89048

COGNITIVE SPECIALIST

Las Vegas, NV · 89106 (Licensed in NV, AZ,
GA, NC, SC, UT, MA, CA)

SURGERY CENTERS

Las Vegas, NV · 89113, 89145, 89147

HOSPITALS

Las Vegas, NV · 89118, 89149, 89119, 89106
Henderson, NV · 89011

Locations available throughout
Las Vegas & Henderson, Nevada



CASE MANAGEMENT SIMPLIFIED – ARIZONA

OUR LOCATIONS

Please call OAK.SUPPORT at 833.777.5077 to schedule.
Specialists available all throughout Arizona.

ORTHOPEDIC SPINE SURGEON

Chandler, AZ · 85224, 85225, 85226, 85248, 85249, 85286
Gilbert, AZ · 85295, 85298
Mesa, AZ · 85205, 85215
Phoenix, AZ · 85048, 85044, 85086, 85014, 85015, 85016, 85004, 85006, 85027, 85050, 85032, 85037, 85029
Scottsdale, AZ · 85255

PAIN MANAGEMENT

Chandler, AZ · 85226
Phoenix, AZ · 85027, 85037
Scottsdale, AZ · 85255
Mesa, AZ · 85210

NEUROSURGEON

Scottsdale, AZ · 85260

PRIMARY CARE

Phoenix, AZ · 85035

IMAGING

Phoenix, AZ · 85048, 85044, 85086, 85014, 85015, 85016, 85004, 85006, 85027, 85050, 85032, 85037, 85029
Scottsdale, AZ · 85255, 85251, 85258
Glendale, AZ · 85308, 85306
Mesa, AZ · 85206, 85203, 85202
Tucson, AZ · 85704, 85745
Avondale, AZ · 85392
Apache Junction, AZ · 85120
Buckeye, AZ · 85326
Casa Grande, AZ · 85222
Chandler, AZ · 85224
Flagstaff, AZ · 86001
Goodyear, AZ · 85395
Tempe, AZ · 85284, 85283
Gilbert, AZ · 85234

CHIROPRACTOR

Chandler, AZ · 85226
Scottsdale, AZ · 85255
Phoenix, AZ · 85027, 85024, 85033, 85044, 85019, 85048
Glendale, AZ · 85308
Mesa, AZ · 85210

PHYSICAL THERAPY

Scottsdale, AZ · 85255
Phoenix, AZ · 85027, 85024
Glendale, AZ · 85308
Mesa, AZ · 85210

COGNITIVE SPECIALIST

Las Vegas, NV · 89106 (Licensed in NV, AZ, GA, NC, SC, UT, MA, CA)

SURGERY CENTERS

Mesa, AZ · 85212
Scottsdale, AZ · 85250
Chandler, AZ · 85225

CHIROPRACTIC, PAIN MANAGEMENT AND MEDICAL TREATMENTS

Chandler, AZ · 85224, 85249
Phoenix, AZ · 85050, 85016
Goodyear, AZ · 85395
Queen Creek, AZ · 85142

CHIROPRACTIC, PAIN MANAGEMENT AND MEDICAL TREATMENTS

Scottsdale, AZ · 85260

PAIN MANAGEMENT, ORTHOPEDIC CARE

Scottsdale, AZ · 85260

ANESTHESIOLOGY, PAIN MANAGEMENT

Chandler, AZ · 85225

MRI/DIAGNOSTIC IMAGING

Phoenix, AZ · 85016

Locations available
throughout Arizona



ARIZONA

DESERT VISTA SURGERY CENTER

The **leader in sports medicine** and minimally invasive spine.

We have one goal: delivering the best possible outcomes in the most comfortable and advanced environment.

Our surgery center is physician-run and home to the latest advances in technology and minimally invasive procedures, the area's most reputable interventional pain management physician, and a hand-picked team of experienced and highly-trained nurses and technicians.



LAS VEGAS

CANYON RIDGE SURGERY CENTER

Our surgery center is proud to offer a wide selection of **interventional pain management and orthopedic surgery services**. With our innovative approach to outpatient care, world-class physician team, and state-of-the-art facility, we are fully equipped to perform both simple procedures and complex surgeries.



Interventional Pain Management

- Ankle Nerve Block
- Regenerative Medicine
- PRP Therapy
- Trigger Point Injections
- Discography
- Kyphoplasty
- Vertiflex Superior
- Medial Branch Block

Spine Surgery

- Laminectomy
- Intrathecal Pump Implant
- ALIF: Anterior Lumbar Interbody Fusion (with bone graft and pedicle screws)

Orthopedic Surgery

- Hip arthroscopy
- Knee arthroscopy
- Shoulder arthroscopy

SPEECH-LANGUAGE PATHOLOGIST

Expert in the treatment of **Traumatic and Acquired Brain Injuries**

Certified by the American Speech-Language-Hearing Association
Licensed in NV, AZ, GA, NC, SC, UT, MA, CA

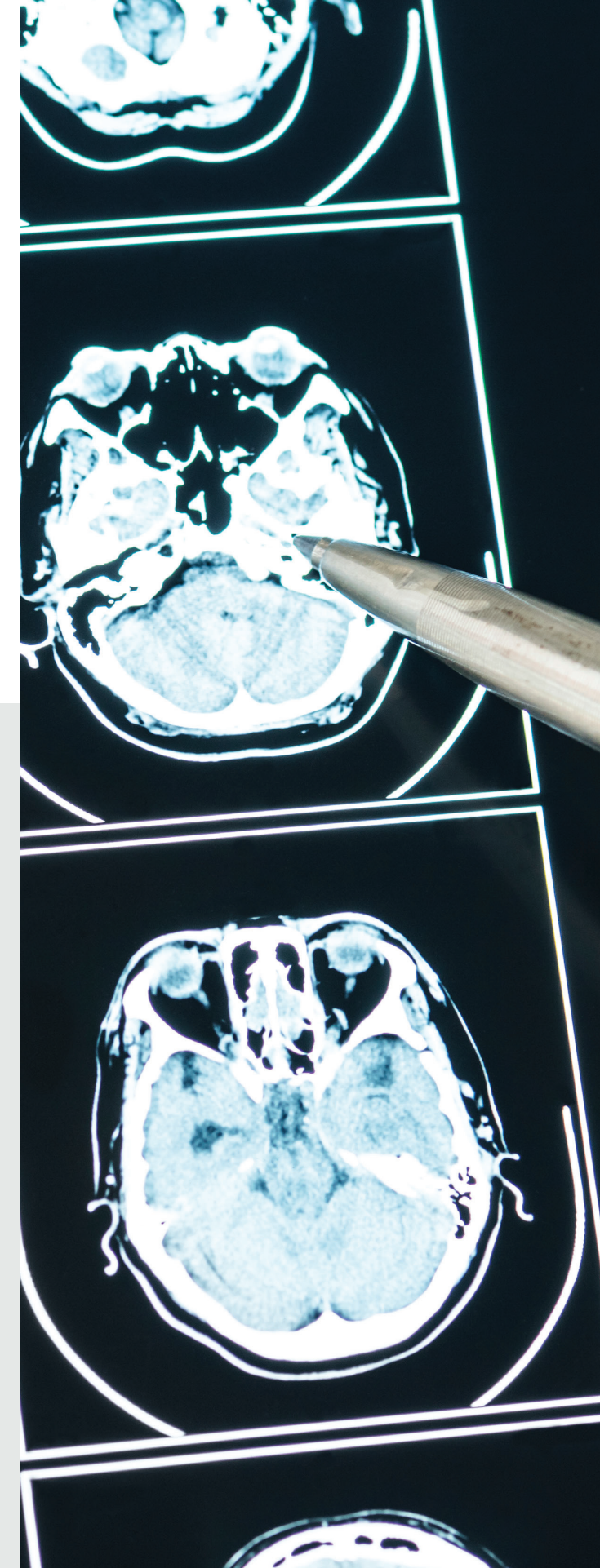
Cognitive Therapy is provided by a **Speech-Language Pathologist** who has an expertise in treating acquired head injury, referred to as head trauma, concussion, and/or TBI.

Cognitive Linguistic Therapy rebuilds the varied skill sets impaired following a brain injury:

- Attention
- Focus
- Planning
- Organizing
- Sequencing
- Problem Solving
- Auditory and Visual Memory
- Cognitive Flexibility
- Emotional Regulation

When an individual suffers a brain injury all/ some of these areas may be impaired.

Cognitive Linguistic Therapy helps to put the gears back into working order following a brain injury.



CONTRACTS WITH MULTIPLE SURGERY CENTERS, OAK.SUPPORT FUNDS PER THE LAW FIRMS REQUEST.



LITIGATION FINANCING

EMPOWERING LAW FIRMS WITH FLEXIBLE FINANCING SOLUTIONS

GET YOUR SWAG BAG



	OAK.SUPPORT	Traditional Banks
RATES & FEES	Because our solutions are bespoke to each individual law firm, our rates are amongst the lowest in the private commercial lending industry. Our fees only consist of a simple closing fee.	Banks will always have the lowest rates because they get their money from the Federal Reserve at 0%. Banks can also charge numerous fees such as pre-payment penalties, draw down fees, etc.
VALUATION OF CONTINGENT FEE CASE INVENTORY	As the most important aspect of underwriting a law firm line of credit, our legal analysts have decades of law firm portfolio valuation experience.	Because traditional banks are financial institutions that are governed by federal regulators, they rarely have any expertise in the valuation of contingent fee portfolios.
APPROACH TO FINANCING	OAK.SUPPORT listens to and gathers critical information from our law firm clients to create a customized solution for each client inclusive of Lines of Credit, Portfolio Funding, Growth Capital and M&A financing.	Traditional banks typically offer working lines of credit as their only financial solution for contingency fee-based law firms where the law firm must abide by the bank's stringent lending terms.
COMMITMENT	OAK.SUPPORT exists because of our deep relationships with our law firm clients where our 100% commitment is to the law firm by providing the best solution for their needs.	Banks have always been beholden to their boss—the federal government via the Federal Reserve. They have very little flexibility due to their overwatch from federal regulators.

OAK.SUPPORT Thank you for the Community Support!

Message our team at info@oak.support and we'll be happy to either ship you a bag or deliver you directly. It is filled with goodies to help your work day go smoothly!
833.777.5077

 833.777.5077

 [INFO@OAK.SUPPORT](mailto:info@oak.support)

 OAK.SUPPORT



OAK.SUPPORT

PERSONAL INJURY FINANCIAL SERVICE

Have questions about our service?
Get in touch with us.

 **833.777.5077**

 **INFO@OAK.SUPPORT**

 **OAK.SUPPORT**

